

Thailand Lab 2012

Lab Innovation
to the Lab Industry in Asia

26-28 September 2012

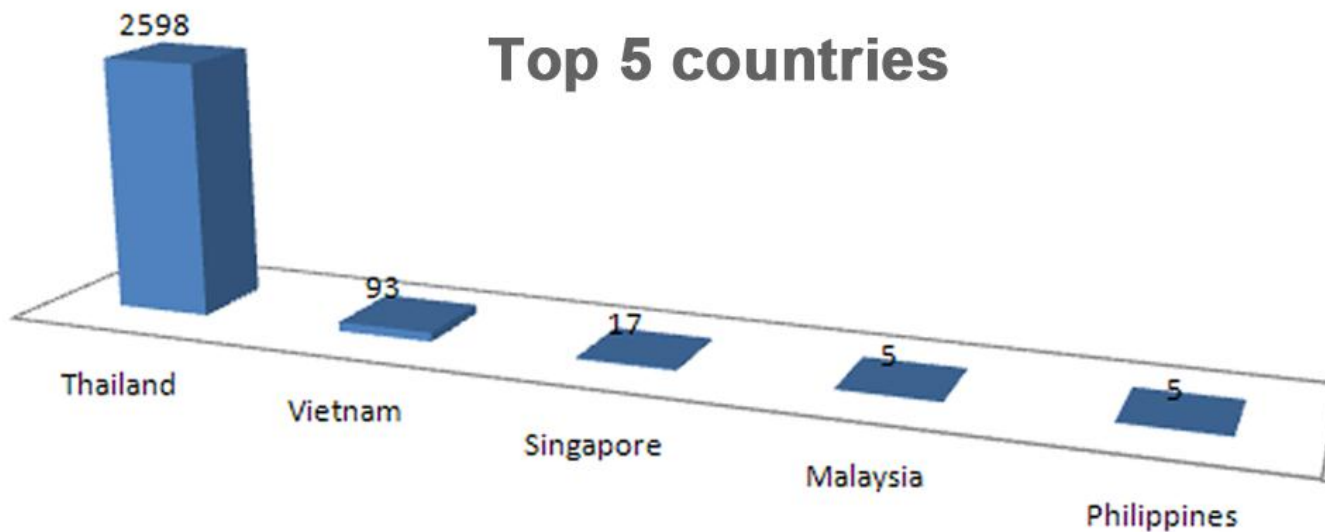
BITEC, Bangkok

Agenda

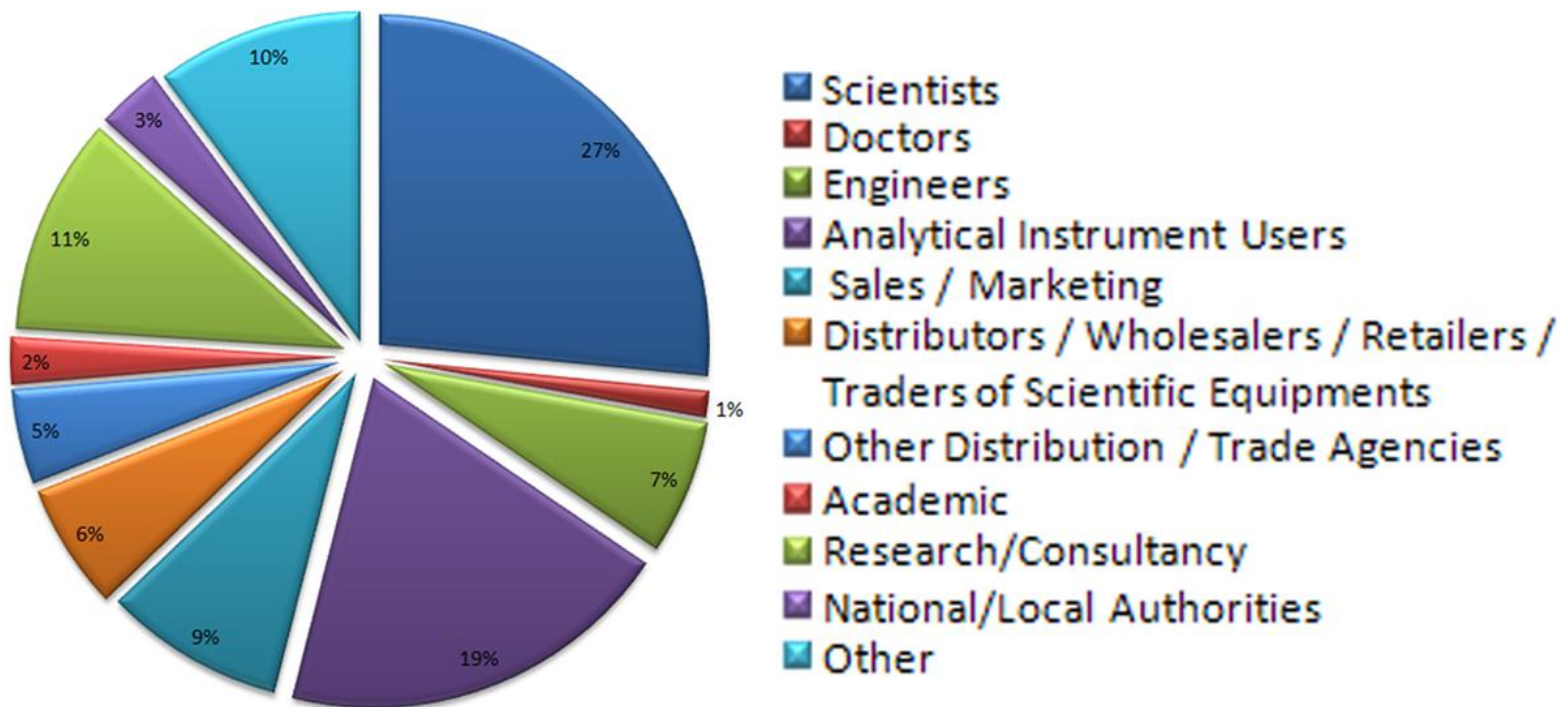


- Synopsis : Thailand Lab 2011
- Thailand Lab 2012 : Lab Innovation to the Lab Industry in Asia
- Campaign : 100-A-Head Program
- Tour Option
- Official Hotel

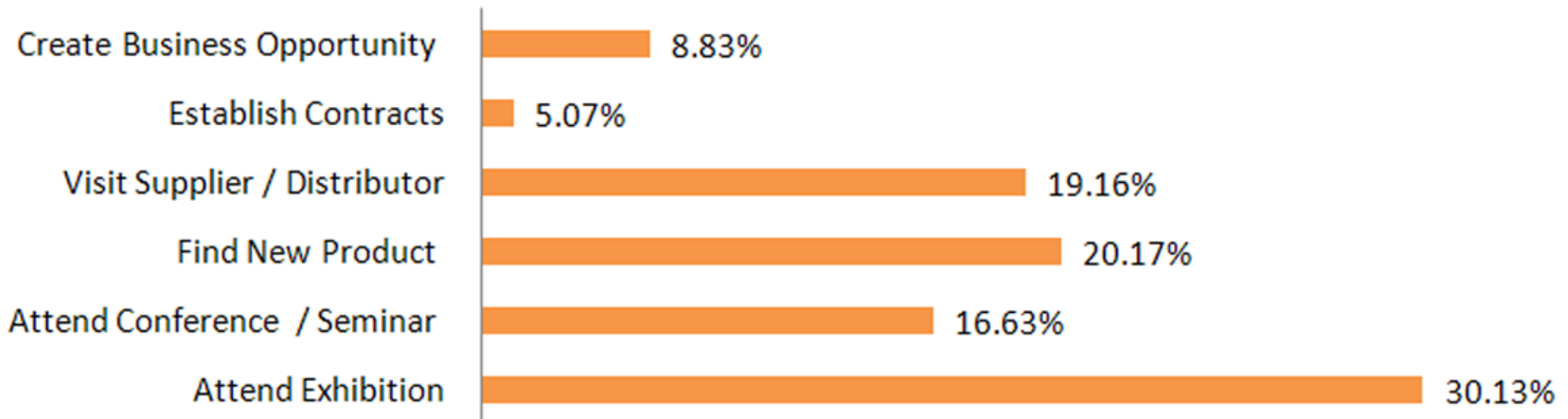
Visitor by countries



Which sector do visitors belong to/ What is the main business of visitors company?



Which activity is the main purpose of visitor visit?





Opening Ceremony by
Minister of Science and Technology
Dr. Plodprasop Suraswadi
(2nd from left)

VIP tour in exhibition halls





Group of International Visitors

Conference by supporters





Exhibition halls

Conference session



THAILAND LAB2012



26-28 Sept 2012
BITEC, Bangkok

Supporters



Media Partner

innoLAB

Supporting Media

FOOD focus
Thailand

FoodBeverage
Thailand

INNO Mag

LAB ASIA
www.lab-asia.com

Industrial
automation
THAILAND

中国化工信息
CHINA CHEMICAL NEWS

CCR
CHINA CHEMICAL REPORTER

THAILAND LAB2012




THAILAND LAB2012

The 2nd Comprehensive Asia's Exhibition and Conference on Laboratory, Scientific Equipment and Technology

Lab Innovation to the Lab Industry in Asia

26-28 September 2012
BITEC, Bangkok

- HealthLab Thailand
- FoodLab Thailand
- BioLab Thailand
- EnviLab Thailand
- ChemLab Thailand
- EnergyLab Thailand

More information, please visit www.thailandlab.com
Tel. +862 670 0900 or thailandlab@vnuexhibitionsap.com

Organized by **vnu exhibitions** asia pacific

Co-organized by 

Supporters: 

Sponsoring Media: 

www.thailandlab.com

In brief



- Date 26-28 September 2012, BITEC, Bangkok
- Theme
 - Lab Innovation to the Lab Industry in Asia ---
 - Platform for CLMV to AEC ---
- Exhibitor Thailand, China, Korea, Japan, Singapore, Korea, Germany, Britain, USA
- Visitor 3,500 trade visitors
 - » 85 % Thailand
 - » 15 % International (CLMV / ASEAN / Asia)

Exhibitor Profile



- Research and Innovation
- Laboratory and analytical Techniques/Instruments/Technologies/Services
- Calibration, Chemical and Reagents
- Health and Safety Equipments, Environmental and Pollution Control Systems
- Testing and Equipments/Machines
- Miscellaneous analytical instruments

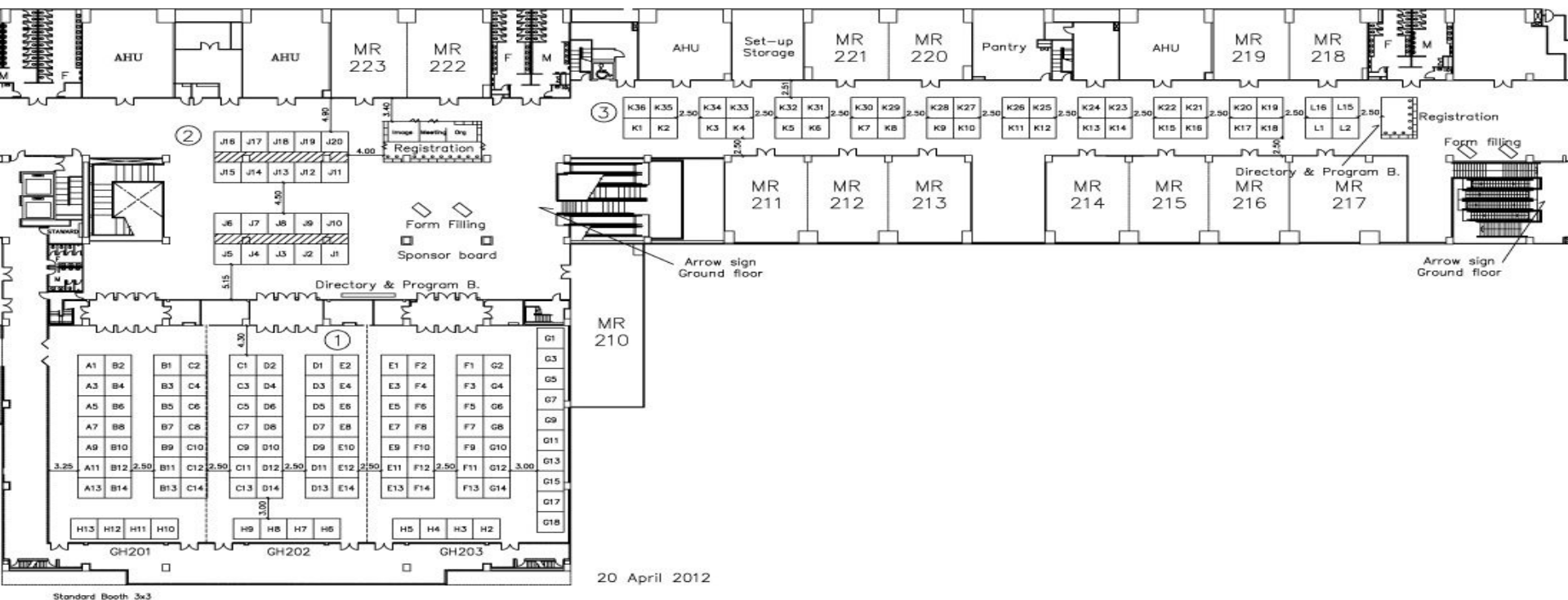
Visitor Profile



- Corporate & Public Buyers
- Scientists, Researchers, Analytical instrument user and Engineer
- Analytical instrument dealer, Traders, Sales/Marketing
- Industrial focus: Food/Medicine/Cosmetics/Environment
- Medical technologist
- Academic

Floor plan

Thailand Lab 2012
26–28 September 2012
Grand Hall 201–203 and Pre-Function, Bitec



Conference program

Conference Session	Date
INNOLAB Magazine	26-28 September 2012
Association of Medical Technologists of Thailand	26-27 September 2012
National Institute of Metrology (Thailand)	26-28 September 2012
The Thai Veterinary Medical Association of Thailand	26 September 2012
Thailand Institute of Scientific and Technology Research	26-27 September 2012
Technology Promotion Association (Thailand-Japan) (INNOMag)	26-28 September 2012
Genetics Society of Thailand	27 September 2012
The Virology Association (Thailand)	27 September 2012
Betagro Science Center	28 September 2012
Aqua Biz Magazine	28 September 2012
Exhibitor Forum	26-28 September 2012

Press Activity

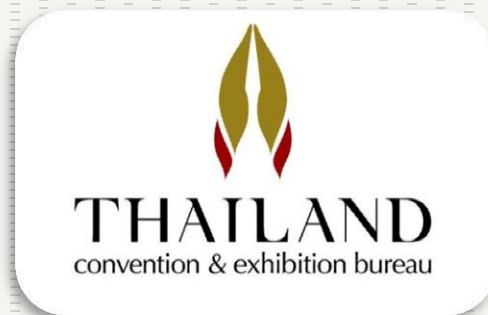
Event	Timing	Location
Press Activities		
-Myanmar	28 March 2012	Yangon, Myanmar
-Indonesia	30 May 2012	Bogor, Indonesia
-Cambodia	13 June 2012	Phnom Penh, Cambodia
-Vietnam	27 July 2012	HCMC, Vietnam
-Laos	2 August 2012	Vientiane, Laos
-Sri Lanka	9 August 2012	Colombo, Sri Lanka
-Thailand	23 August 2012	Bangkok, Thailand

Campaign's Supporter



THAILAND
convention & exhibition bureau

100 A-HEAD Campaign



Tour Option

Business + Leisure Experience

- **Exhibition Visit**
 - Thailand Lab 2012, BITEC, Bangkok
 - Only Lab exhibition in Thailand
- **Factory Visit**
 - Official Equipment Manufacturing Co.,Ltd, Nakorn Pathom Province
 - Thailand's Largest Lab Equipment Manufacturer
 - Thailand's Longest Established Lab Equipment Manufacturing Factory
 - Thailand's Largest market player in the lab equipment industry

Official Equipment Manufacturing

FLEXLAB[®]
The laboratory maker



THAILAND LAB2012



Petro chemical and Oil



Pharmaceutical

Food and Beverage



FLEXLAB[®]

The laboratory maker



University and Institute

Official Hotel



Official Hotel



The Imperial Queen's Park Hotel

Host of Warm *Hospitality*

The
IMPERIAL
QUEEN'S PARK HOTEL | BANGKOK



Your Choice of Accommodation

The Imperial Queen's Park hotel is located on Sukhumvit Road, one of the city's business districts, with private access to public park, short walking distance to mass transit stations, close to upscale shopping havens and Queen Sirikit National Convention Center.

With 2 elegant towers that accommodate 1,250 guestrooms, hotel offers various room types each with full amenities to suite individual traveler's requirements.

The hotel also features a fine selection of restaurants offering an array of delectable culinary choices of Thai delicacies, sumptuous Cantonese or Japanese favorite dishes as well as other international delights.

For health enthusiasts, the hotel's Imperial Spa, well equipped fitness center with squash court, 2 swimming pools plus a jogging track in the nearby park will perfectly invigorate their adrenalin.

Official Hotel



The Imperial Queen's Park Hotel

Host of Warm *Hospitality*

The
IMPERIAL
QUEEN'S PARK HOTEL | BANGKOK



The Imperial Queen's Park Hotel, Bangkok

To make room reservation, please visit <http://webgroup.imperialhotels.com/ILDEX/>
For group rates and other enquiries, please contact below

Contact Person: Ms. Patimaporn Kajornbutra, Assistant Sales Manager

Address: 199 Sukhumvit Soi 22
Bangkok 10110 Thailand

Tel: (66) 2261 9000

Fax: (66) 2261 9496

Email: patimaporn@imperialhotels.com

Website: www.imperialhotels.com

Project Team



VNU Exhibitions Asia Pacific Co., Ltd.

Mr. Teerayuth Leelakajornkij Business Unit Director
Tel. (66) 2670 0900 # 201 or teerayuth@vnuexhibitionsap.com

Mr. Anucha Parnpichate Project Manager
Tel. (66) 2670 0900 # 202 or anucha@vnuexhibitionsap.com

Ms. Warisara Pongpattapan Sales Manager
Tel. (66) 2670 0900 # 203 or warisara@vnuexhibitionsap.com

Ms. Panadda Kongma Assistant Manager
Tel. (66) 2670 0900 # 204 or panadda@vnuexhibitionsap.com

Mr. Natthapong Udomseth Senior Sale Executive
Tel. (66) 2670 0900 # 205 or natthapong@vnuexhibitionsap.com

Mr. Pralongpol Sittijinda Account Executive
Tel. (66) 2670 0900 # 206 or pralongpol.sit@vnuexhibitionsap.com

Ms. Nalinrat Ananamnuaylap Project Assistant
Tel. (66) 2670 0900 # 207 or nalinrat.ana@vnuexhibitionsap.com

Thank you & See you

Thailand Lab 2012
26-28 September 2012
BITEC, Bangkok
www.thailandlab.com